

SKILLS COLLEGE UK

LEVEL 2 NVQ DIPLOMA IN RAIL ENGINEERING TRACK MAINTENANCE

LEVEL 2 CERTIFICATE IN RAIL ENGINEERING TRACK MAINTENANCE

What will you gain from this Course?

This course will give you the knowledge, skills, qualifications and licences to successfully carry out rail track maintenance on the permanent way. The course runs for 8 weeks full time and includes the opportunity to achieve the following licences;

- Personal Track Safety (PTS)
- Track Induction Course (TIC)
- DCCR
- OLEC1
- Small tools tickets

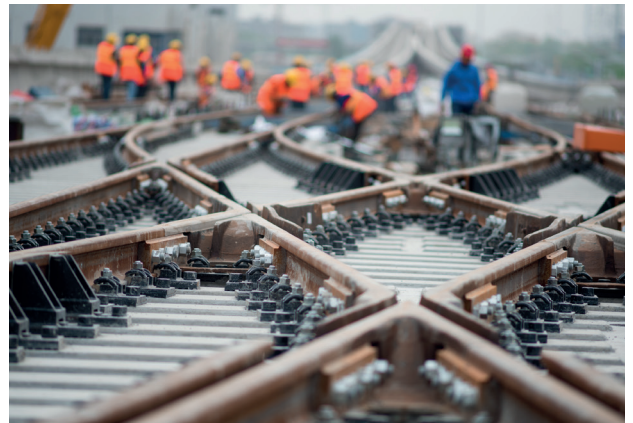
You will also gain primary sponsorship to work in the rail industry, Network Rail approved PPE and be put through a Network Rail Drugs and Alcohol test.

What will I need to do as part of my the Course?

You will need to complete a portfolio or written work as well as be observed showing practical skills when working on rail track which will include physically challenging activities in various weather conditions. You will also need to pass written and practical examinations to achieve some of the licences listed above.

How often will I need to attend?

This is a full-time course for a period of 8 weeks so you will need to attend Monday to Friday 9:00am until 5:30pm everyday.



What type of work can I expect to get when I complete the course?

Once you have completed the course you will have all the qualifications and skills to gain work as a rail track operative or 'Trackman'. You will go on to track as a 'blue hat' which means you are inexperienced but can then move on to a 'white hat' once you show your supervisors your understanding and competency. Once you have achieved this a range of new training opportunities open up to you allowing you to develop in your new career.

Will I get help in finding employment?

Yes. As part of this course you will have a primary sponsor which is an approved Network rail employer that can offer you work once qualified. Skills College UK will also support and advise you on new opportunities as and when they arise.

How do I sign up?

Register your interest by contacting us on the details below. We will then arrange for you to attend our Information, Advice and Guidance sessions which lead on to enrolment for our next course.



Frequently Asked Questions

Where will the course be held?

Great Central Railway, Birstall station, Leicester, LE4 3BR.

Is the course free?

The course is completely free for anyone who is on Universal Credit or less than £17,000 per year income.

Will I get help with my travel to the course?

Yes, this is a government funded programme aimed to support those who are not in work or on a low income into sustainable employment. Travel expenses will be funded by the job centre.

What is the typical starting wage working in the rail industry?

Typical starting wage is £13.50-£14 per hour. Normal shift duration is for 10 hours' and the majority of work will be night shifts.

How quickly will I be offered work once qualified?

We expect all learners to be offered your first shift within the first 2 weeks of completing the course. These are typically weekend shifts which are the busiest nights of the week and demonstrate to your employer your commitment and competency before moving on to midweek work.

Will I have everything I need to start work straight away?

Yes. You will have all the competencies employers will expect you to have as a new person 'blue hat' coming in to the rail industry. These competencies will be linked to your sentinel card. You will have an up to date medical and drug and alcohol test and full PPE although your sponsor will give you some branded PPE before your first shift.

I have my own employment links, do I need to go with the sponsor SCUK provide?

You are free to work for whoever you want. Skills College UK have established links to give you an opportunity to gain work straight after the course but if you have your own links then you are free to go with them.

Does it help if I drive?

Yes, although it is not mandatory. Shifts will be in a variety of locations, not always easily accessible via public transport. Many employers put on vans that will pick you up from an agreed meeting position to help you get work.

When will my medical and drug and alcohol test be and what happens if I fail it?

Medical and drug and alcohol tests will be done in week 4 of the course. These are official Network Rail tests that will be linked to your sentinel profile. Failing a drug and alcohol test will result in a 5 year ban from the rail industry.

Can I change my employer/sponsor if I want to?

Yes. You can have a Primary Sponsor and up to 2 sub-sponsors at any one time. You can change these at any time by requesting to be de-sponsored. Your Primary Sponsor has first right of refusal on your availability to work so should always be the company giving you the most consistent opportunities.

For any more information, please do not hesitate to contact us on the details below;

Contact details:

T: 01925 506 507 **E:** info@scuk-ltd.co.uk **W:** www.scuk-ltd.co.uk
A: SCUK, Suite 2 Phoenix House, Golborne Enterprise Park, Kidglove Road, Wigan WA3 3DP

Skills College UK
SCUK is a trading style of Skills College UK Ltd
www.scuk-ltd.co.uk 01925 506507